



Rapid urbanization, high population growth rates and high levels of poverty, unemployment and vested interests in land and housing markets in developing countries pose serious obstacles to efforts by governments to provide adequate housing and improve the living conditions for all urban dwellers.



FACTS FOR CHANGE

Since 2008 the majority of the world's population has lived in urban areas. Only South Asia and Sub-Saharan Africa remain **more rural than urban**.

Population, by locale, 2014 (%)

● Rural ● Slum ● Other urban



East Asia & Pacific



South Asia

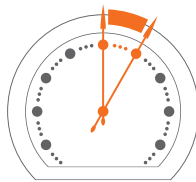


Latin America & Caribbean



Sub-Saharan Africa

1 Billion
people live in
slums today.
– one in eight people –



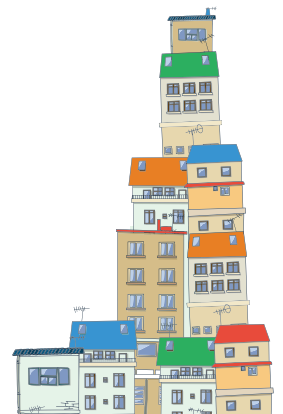
4,000
homes per hour
need to be built
worldwide to meet the
current housing demand.



1990



2014



2030

Almost
60% of the
Sub-Saharan African urban
dwellers live in slums. The
biggest growth rate of slum
dwellers in numbers is in Asia.

If no action is taken,
3 Billion
people will be forced to
live in slums by 2030.

Despite the proportion
of urban populations living
in slums decreasing from

39% to 30%

between 2000 and 2014, the
number of slum dwellers continues
to grow in absolute terms,
particularly in African countries.

Globally, **6 in 10**

people use sanitation facilities that
are not safely managed, and may
contribute to the spread of diseases,
especially in African Countries.

Almost One third of people
worldwide have no access to clean
water; in Sub-Saharan Africa almost
half of the population has not even
the most basic water resources.



Poverty is often gender related. In 89
countries with available data, there are

4.4 million
more women than
men living on less
than **US\$1.90 a day**.



In Sub-Saharan Africa, women comprise 48.7% of
agricultural labour, but only 15% of agricultural land
holders; in the Middle East and North Africa, women
comprise 40% of agricultural labour and 5% of
landowners; in Asia (excluding Japan), women comprise
42% of agricultural labour and 11 per cent of landholders.

Email: psup@un.org | www.unhabitat.org/psup | www.mypsup.org

TIME IS OF THE ESSENCE. WE HAVE TO ACT NOW!